



Addendum Number Two

Date of Issue: 08/08/12

Project: USC 1800 Gervais Street Renovations – Construction – Phase II
Project Number: H27-Z008-B

TO: ALL BIDDERS OF RECORD

This addendum modifies the Contract documents only in the manner and to the extent stated herein and shown on any accompanying drawings and will become part of the Contract Documents. Except as specified or otherwise indicated by this Addendum, all work shall be in accordance with the basic requirements of the Contract Documents. Insofar as those documents are at variance with this Addendum, this Addendum shall govern.

BIDDERS SHALL ACKNOWLEDGE RECEIPT OF ADDENDUM IN THE SPACE PROVIDED ON THE BID FORM. FAILURE TO DO SO MAY CONSTITUTE A REASON TO REJECT THE BID.

This Addendum consists of five (5) pages including the following:

I. Enclosures:

1. SK-M-1
2. SK-M-2
3. SK-M-3

II. General Information: Questions and Answers

Access to 1800 GERVAIS can be provided [by appointment], during the following dates and times:

8-AUG [2pm to 4:30pm]

9-AUG [7:30am to 7:30pm]

10-AUG [8:30am to 1pm]

13-AUG [8:30am to 4:30pm]

To confirm and schedule access, please contact: Christian Mergner @ 803-587-0893

III. Changes to the Specifications:

Not Used

IV. Changes to the Drawings:

1. **SHEET M100 Floor Plans:** See attached sketch SK-M-1. This sketch adds two fire dampers to the corridor duct penetrations for AHU-5.

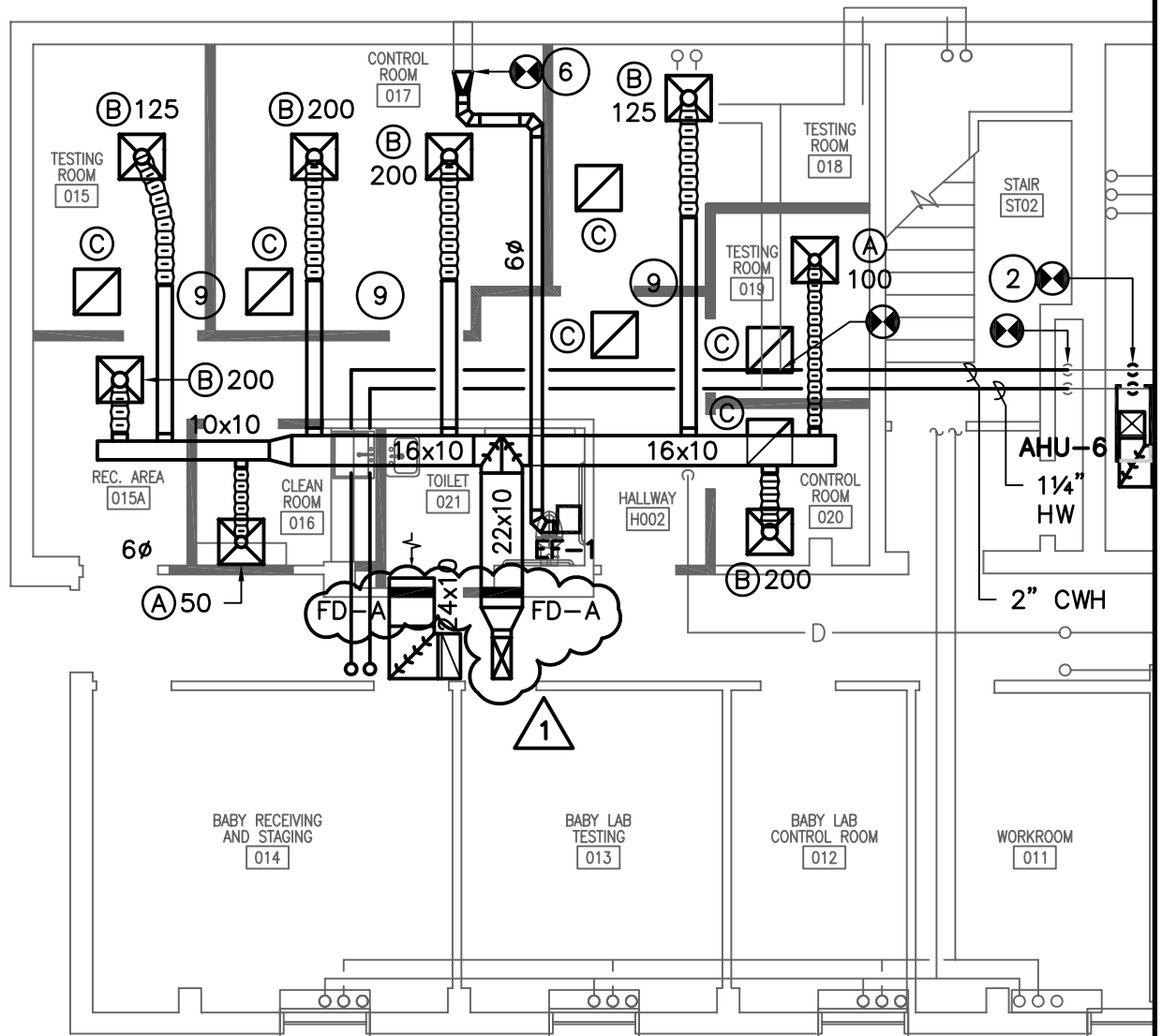
2. **SHEET M100 Floor Plans:** See attached sketch SK-M-2. This sketch shifts the unit and supply duct to coordinate with the corridor below.

3. **SHEET M100 Floor Plans** See attached sketch SK-M-3. This sketch indicates the type of condensate pump required to lift the condensate up to the gravity drain.

V. Prior Approvals

Not Used

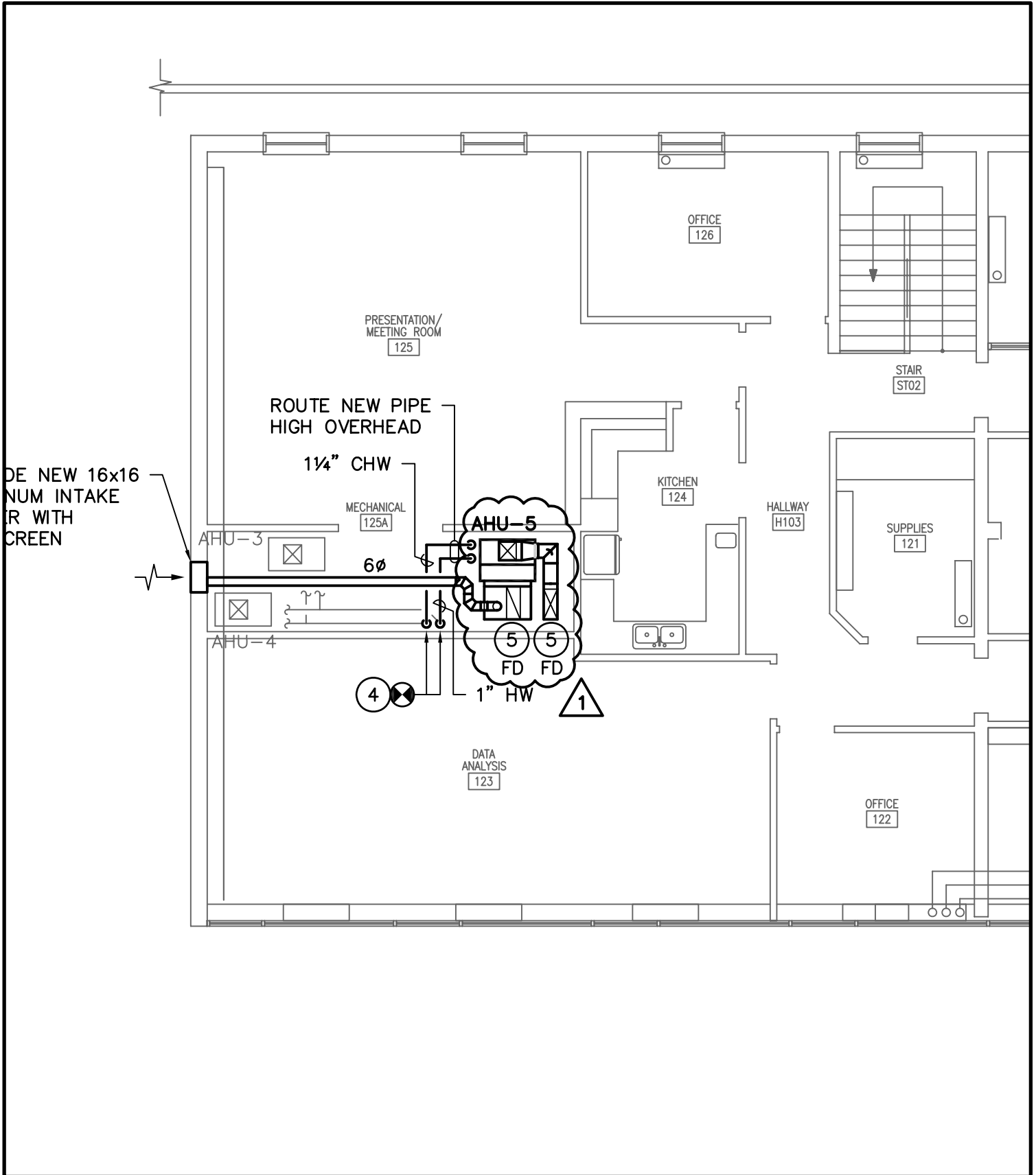
END OF ADDENDUM TWO



1800 GERVAIS ST RENOVATIONS
 CONSTRUCTION - PHASE II
 COMPASS 5 PARTNERS, LLC

MECHANICAL REVISIONS

ADDENDUM 1 SK-M-1 08/07/2012
 REF SHEET: M100; SCALE: 1/8" = 1'-0"




1800 GERVAIS ST RENOVATIONS
 CONSTRUCTION - PHASE II
 COMPASS 5 PARTNERS, LLC

MECHANICAL REVISIONS

ADDENDUM 1 SK-M-2 08/07/2012
 REF SHEET: M100; SCALE: 1/8" = 1'-0"

NOTES TO SHEET

- ① 16x8 TRANSFER DUCT ABOVE CEILING.
- ② 1¼" CHILLED WATER AND 1" HOT WATER PIPE DROPS DOWN TO AHU-6.
- ③ ~~¾" DRAIN PUMPED UP TO GRAVITY FALL BACK TO EXISTING OVERHEAD DRAIN.~~
PROVIDE CONDENSATE PUMP EQUAL TO LITTLE GIANT VCMX-20ULS. 
- ④ ROUTE NEW PIPE UP THROUGH FLOOR AND FIRE SEAL FLOOR PENETRATION.
CONNECT TO EXISTING CHW AND HW PIPES FEEDING AHU-3 AND AHU-4.
- ⑤ DUCT DROPS DOWN THROUGH FLOOR SLAB WITH FIRE DAMPER AT SLAB.
COORDINATE WITH CONCRETE BEAM LOCATIONS.
- ⑥ EXTEND AND CONNECT EXHAUST DUCT TO EXISTING EXHAUST DUCT IN THIS
LOCATION.
- ⑦ CONNECT RUNOUT DUCT TO EXISTING SUPPLY DUCT BELOW FLOOR
SLAB ABOVE.
- ⑧ ROUTE DUCT UP IN BETWEEN FLOOR JOISTS AS REQUIRED TO COORDINATE
WITH EXISTING PIPE. TYPICAL OF ALL RUNOUT DUCTS.
- ⑨ KEEP DUCT TIGHT TO CONCRETE BRIDGING MEMBER TO MAINTAIN CEILING HEIGHT.